

## GENERAL DESCRIPTION

- ✓ 4/2- way directional control valves with mechanical operation
- ✓ Reliability and long life
- ✓ Mounting surface CETOP5 (NG10)

## RH10...4F...



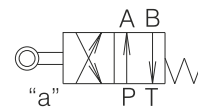
These RH10...4F... valves consist of a spool, housing, springs and mechanical control unit. They are used to control the start, stop and direction of flow.

The valves are used for hydraulic power control. This model is designed with two-spring centered spool.

The housing has 5-chambers and vertical "T" duct.

The valve location during assembly is of minor importance, but the horizontal position is generally recommended.

## Symbol



## ORDERING CODE

RH	10			F			
----	----	--	--	---	--	--	--

Directional control valve

Nominal size

Functional symbol

see page 3/13

Connection threads\*\*

**M** - M14x1,5

**G** - G1/4"

**N** - normal

**T** - tropical

Detent\*

**Omit** - without detent

**D** - with detent

Modification

\* Only for type of control 7-manual

\*\* Only for type of control 6-pneumatic

**4** - mechanical

**6** - pneumatic

**7** - manual

Type of control

## FUNCTIONAL SYMBOLS

see page 3/13



## TECHNICAL DATA

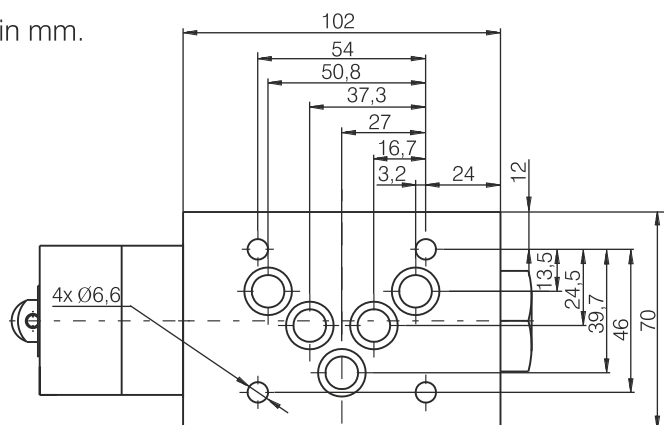
DATA	UNIT	VALUE/RANGE
Weight	kg	4
Max. Pressure	port P , A & B port T	32 16
Rated flow	(at $\Delta p=0,1\text{MPa.}$ )	l/min
Actuating force	$-F_{\min}$ $-F_{\max}$	50 150

## CHARACTERISTICS

See page 6/13

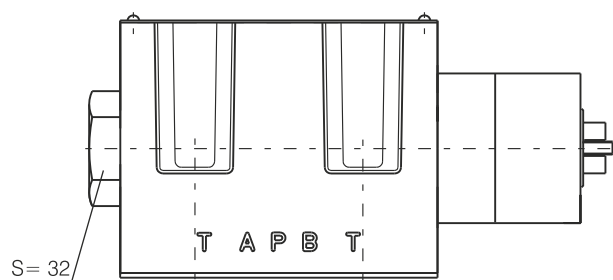
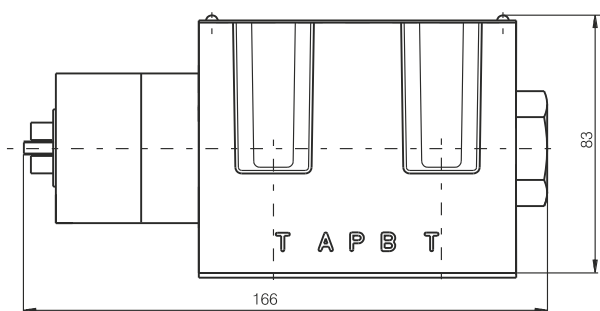
## DIMENSION

All dimensions are shown in mm.



Symbols 12 , 17 , 24 , 27 , 34 , 39 , 45 , 68 , 70 , 83

Symbols 10 , 13 , 16 , 28 , 32 , 36 , 64 , 78



## SEALS

